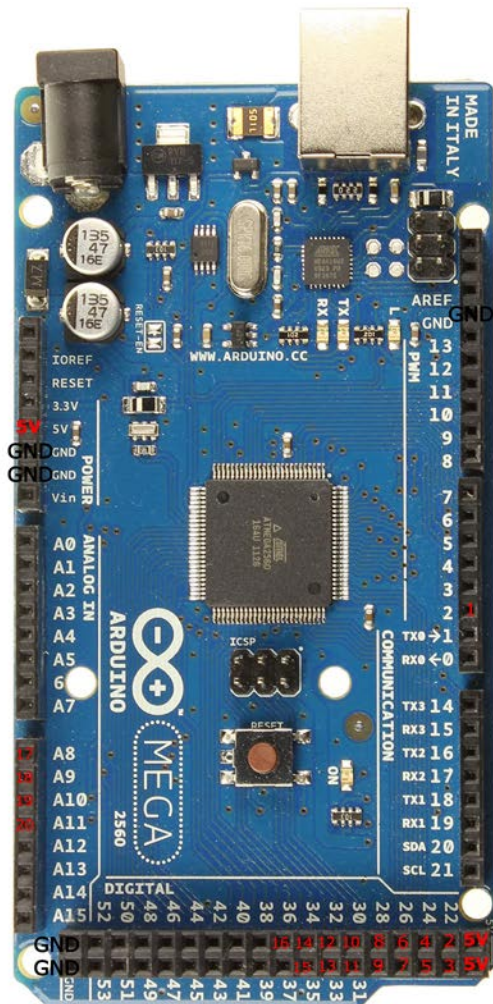


How plug our Switch Panel with Arduino

Very important, **ALL** the switches, potentiometers, rotate switches and servomotor must be plug with ARDUINO (see below).

SWITCH PANEL G1000

- 0= GND
- 1= LED
- 2= STBY Battery
- 3= Test All
- 4= Battery
- 5= Generator 1
- 6= Avionics Power
- 7= 2 Buses Cross tie switch
- 8= Beacon Lights
- 9= Landing Lights
- 10= Taxi Lights
- 11= NAV Lights
- 12= Strobe Lights
- 13= Fuel Pump
- 14= Pitot Heat
- 15= EMPTY
- 16= TEST Prop
- 17= STBY IND (see note 1) *
- 18= SW/CB Panel (see note 1) *
- 19= PEDESTAL (see note 1) *
- 20= AVIONICS (see note 1) *



1 = Potentiometer have three wires, plug the central at the PIN, Left at GND and Right at 5V.
If the rotation is wrong respect to the Flight Simulator, Plug Left at 5V and Right at GND